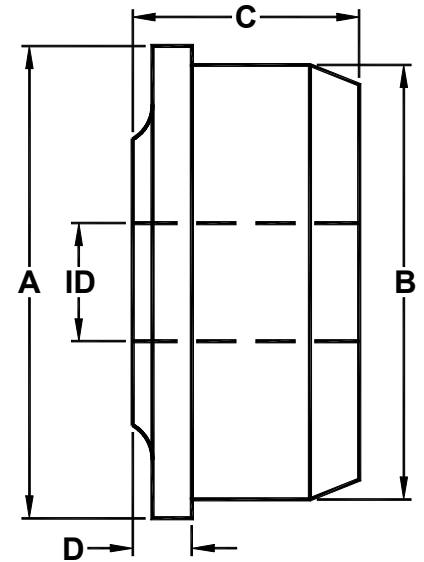


LIGHT DUTY ROLL END BEARINGS

PART NO.	A TUBING- PIPE OD	TUBING- PIPE GAUGE	B TUBING- PIPE ID	TUBING- PIPE WALL	C OVERALL LENGTH	D FLANGE + BOSS
420WL-	1/2	20	0.430	0.035	1/2	3/16
418WL-		18	0.402	0.049		
520WL-	5/8	20	0.555	0.035	1/2	3/16
	0.706					
4EMWL-	(1/2" EMT)	EMT	0.622	0.042	11/16	3/16
620WL-	3/4	20	0.680	0.035	11/16	3/16
618WL-		18	0.652	0.049		
616WL-		16	0.620	0.065		
720WL-	7/8	20	0.805	0.035	11/16	3/16
718WL-		18	0.777	0.049		
716WL-		16	0.745	0.065		
	0.922					
6EMWL-	(3/4" EMT)	EMT	0.824	0.049	11/16	3/16
820WL-	1	20	0.930	0.035	11/16	3/16
818WL-		18	0.902	0.049		
817WL-		17	0.884	0.058		
816WL-		16	0.870	0.065		
	1.050					
6P4WL-	(3/4" Pipe)	Sch 40	0.824	0.113	11/16	3/16
917WL-	1 1/8	17	1.009	0.058	11/16	3/16
916WL-		16	0.995	0.065		
	1.163					
8EMWL-	(1" EMT)	EMT	1.049	0.057	11/16	3/16
1020WL-	1 1/4	20	1.180	0.035	3/4	3/16
1018WL-		18	1.152	0.049		
1016WL-		16	1.120	0.065		
	1.315					
8P4WL-	(1" Pipe)	Sch 40	1.049	0.133	3/4	3/16
1118WL-	1 3/8	18	1.277	0.049	3/4	3/16
1116WL-		16	1.245	0.065		

ID Specify shaft Diameter in part number (Ex: 1/2, 3/4, etc.)

Add "M" to end of part number if application is wet or moist.



**CUSTOM SIZES AVAILABLE
UPON REQUEST**



WOODEX

BEARING COMPANY, INC.

216 BAY POINT ROAD, GEORGETOWN, MAINE 04548-3509 USA

(800) 526-8800 Nationwide; 1 (207) 371-2210 Outside USA

FAX: 1 (207) 371-2169 e-mail: sales@woodex-meco.com

<http://www.woodex-meco.com>