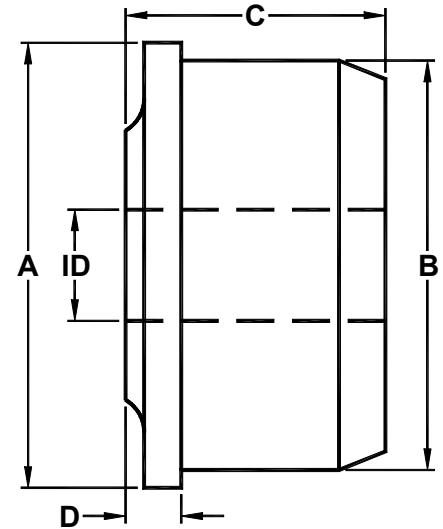


STANDARD ROLL END BEARINGS

PART NO.	A TUBING- PIPE OD	TUBING- PIPE GAUGE	B TUBING- PIPE ID	TUBING- PIPE WALL	C OVERALL LENGTH	D FLANGE + BOSS
1916WR-	2 ³ / ₈	16	2.245	0.065	1 ⁵ / ₈	3/8
1913WR-		13	2.185	0.095		
1911WR-		11	2.135	0.120		
2.375						
16P4WR-	(2" Pipe)	Sch 40	2.067	0.154	1 ⁵ / ₈	3/8
16P8WR-		Sch 80	1.939	0.218		
2016WR-	2 ¹ / ₂	16	2.370	0.065	1 ⁵ / ₈	3/8
2014WR-		14	2.334	0.083		
2013WR-		13	2.310	0.095		
2011WR-		11	2.260	0.120		
2010WR-		10	2.232	0.134		
2216WR-	2 ³ / ₄	16	2.620	0.065	1 ⁵ / ₈	3/8
2213WR-		13	2.560	0.095		
2211WR-		11	2.510	0.120		
2.875						
20P4WR-	(2 ¹ / ₂ " Pipe)	Sch 40	2.469	0.203	1 ⁵ / ₈	3/8
2416WR-	3	16	2.870	0.065	1 ³ / ₄	3/8
2414WR-		14	2.834	0.083		
2413WR-		13	2.810	0.095		
2411WR-		11	2.760	0.120		
2616WR-	3 ¹ / ₄	16	3.120	0.065	1 ³ / ₄	3/8
2613WR-		13	3.060	0.095		
3.500						
24P4WR-	(3" Pipe)	Sch 40	3.068	0.216	1 ³ / ₄	3/8
24P8WR-		Sch 80	2.900	0.300		
2816WR-	3 ¹ / ₂	16	3.370	0.065	1 ³ / ₄	3/8
2813WR-		13	3.310	0.095		
2811WR-		11	3.260	0.120		
3016WR-	3 ³ / ₄	16	3.620	0.065	1 ³ / ₄	3/8
3011WR-		11	3.510	0.120		
4.000						
28P4WR-	(3 ¹ / ₂ " Pipe)	Sch 40	3.548	0.226	1 ³ / ₄	3/8
3216WR-	4	16	3.870	0.065	1 ³ / ₄	3/8
3214WR-		14	3.834	0.083		
3213WR-		13	3.810	0.095		
3211WR-		11	3.760	0.120		

ID Specify shaft Diameter in part number (Ex: 1/2, 3/4, etc.)

Add "M" to end of part number if application is wet or moist.



**CUSTOM SIZES AVAILABLE
UPON REQUEST**



WOODEX

BEARING COMPANY, INC.

216 BAY POINT ROAD, GEORGETOWN, MAINE 04548-3509 USA

(800) 526-8800 Nationwide; 1 (207) 371-2210 Outside USA

FAX: 1 (207) 371-2169 e-mail: sales@woodex-meco.com

<http://www.woodex-meco.com>