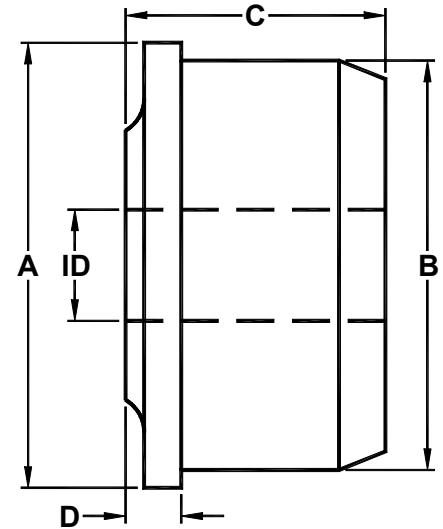


STANDARD ROLL END BEARINGS

PART NO.	A TUBING- PIPE OD	TUBING- PIPE GAUGE	B TUBING- PIPE ID	TUBING- PIPE WALL	C OVERALL LENGTH	D FLANGE + BOSS
1118WR- 1116WR-	1 ³ / ₈	18 16	1.277 1.245	0.049 0.065	1 ¹ / ₄	1/4
1218WR- 1216WR- 1214WR-	1 ¹ / ₂	18 16 14	1.402 1.370 1.334	0.049 0.065 0.083	1 ¹ / ₂	1/4
10EMWR-	1.510 (1 ¹ / ₄ " EMT)	EMT	1.380	0.065	1 ¹ / ₂	1/4
1316WR- 1311WR-	1 ⁵ / ₈	16 11	1.495 1.385	0.065 0.120	1 ¹ / ₂	1/4
10P4WR-	1.660 (1 ¹ / ₄ " Pipe)	Sch 40	1.380	0.140	1 ¹ / ₂	1/4
12EMWR-	1.740 (1 ¹ / ₂ " EMT)	EMT	1.610	0.065	1 ¹ / ₂	1/4
1416WR- 1414WR- 1413WR- 1411WR-	1 ³ / ₄	16 14 13 11	1.620 1.584 1.560 1.510	0.065 0.083 0.095 0.120	1 ¹ / ₂	1/4
1516WR- 1513WR-	1 ⁷ / ₈	16 13	1.745 1.685	0.065 0.095	1 ¹ / ₂	1/4
12P4WR- 12P8WR-	1.900 (1 ¹ / ₂ " Pipe)	Sch 40 Sch 80	1.610 1.500	0.145 0.200	1 ¹ / ₂	1/4
1618WR- 1616WR- 1614WR- 1613WR- 1611WR-	2	18 16 14 13 11	1.902 1.870 1.834 1.810 1.760	0.049 0.065 0.083 0.095 0.120	1 ⁵ / ₈	3/8
16EMWR-	2.197 (2" EMT)	EMT	2.067	0.065	1 ⁵ / ₈	3/8
1818WR- 1816WR- 1814WR- 1813WR- 1811WR- 1810WR-	2 ¹ / ₄	18 16 14 13 11 10	2.152 2.120 2.084 2.060 2.010 1.982	0.049 0.065 0.083 0.095 0.120 0.134	1 ⁵ / ₈	3/8

ID Specify shaft Diameter in part number (Ex: 1/2, 3/4, etc.)

Add "M" to end of part number if application is wet or moist.



A full line of conveyor roll end bearings, including standard, light duty, free-draining, blind-bore, V-grooved or conical bearings, for any standard pipe or tubing from 1/2" 20 gauge tube through 6", schedule-40 pipe are also available. Non-standard pipes can also be accommodated.

**CUSTOM SIZES AVAILABLE
UPON REQUEST**



WOODEX

BEARING COMPANY, INC.

216 BAY POINT ROAD, GEORGETOWN, MAINE 04548-3509 USA

(800) 526-8800 Nationwide; 1 (207) 371-2210 Outside USA

FAX: 1 (207) 371-2169 e-mail: sales@woodex-meco.com

<http://www.woodex-meco.com>